



Catalog

UNIT 1A Elevations (1) 1

UNIT 1A Floor plan (1) 2

UNIT 1B Floor (2) (1) 3

UNIT 1B Elevations (2) (1) 4

UNIT 2A Elevations (1) 5

UNIT 2A Floor plan (1) 6

future building 7

UNIT 2B Floor (1) 8

UNIT 2B Elevations (1) 9

strandfontein development new site strandf (1) 10

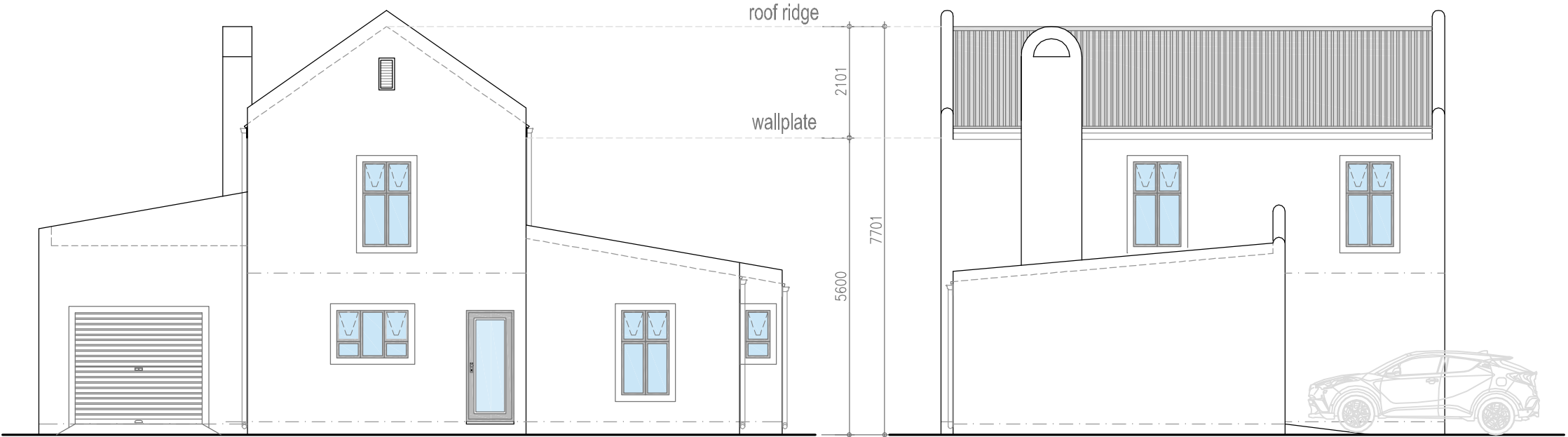
UNIT 3A Floor 2 11

UNIT 3A Elevations (1) 12

UNIT 3B Elevations 13

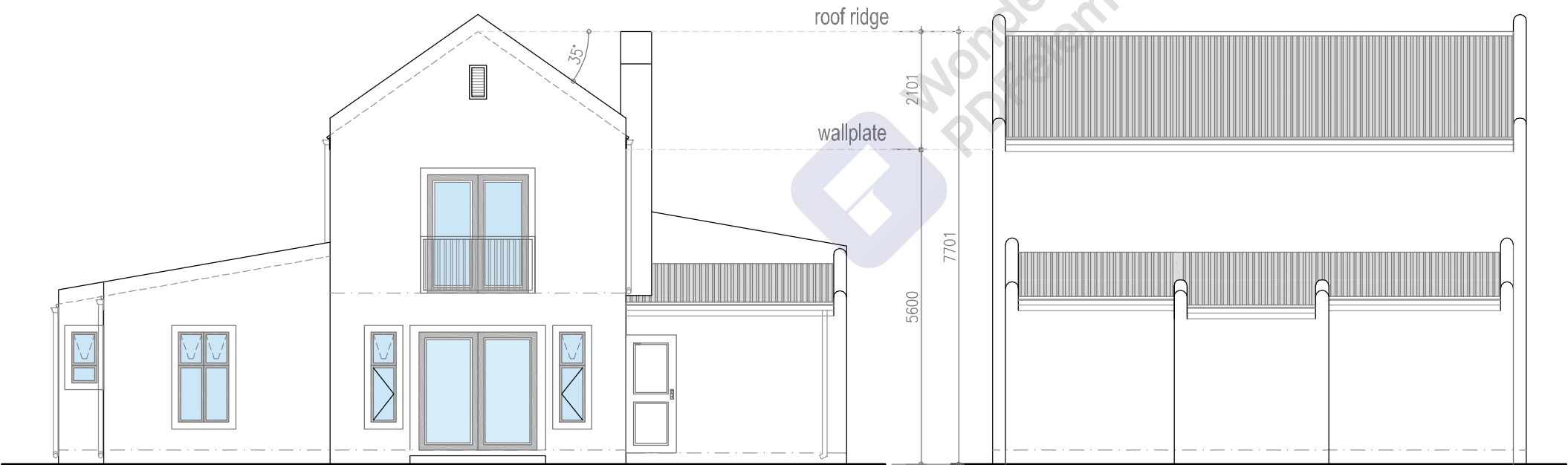
UNIT 3B Floor (2) (1) 14





ELEVATION A

ELEVATION B



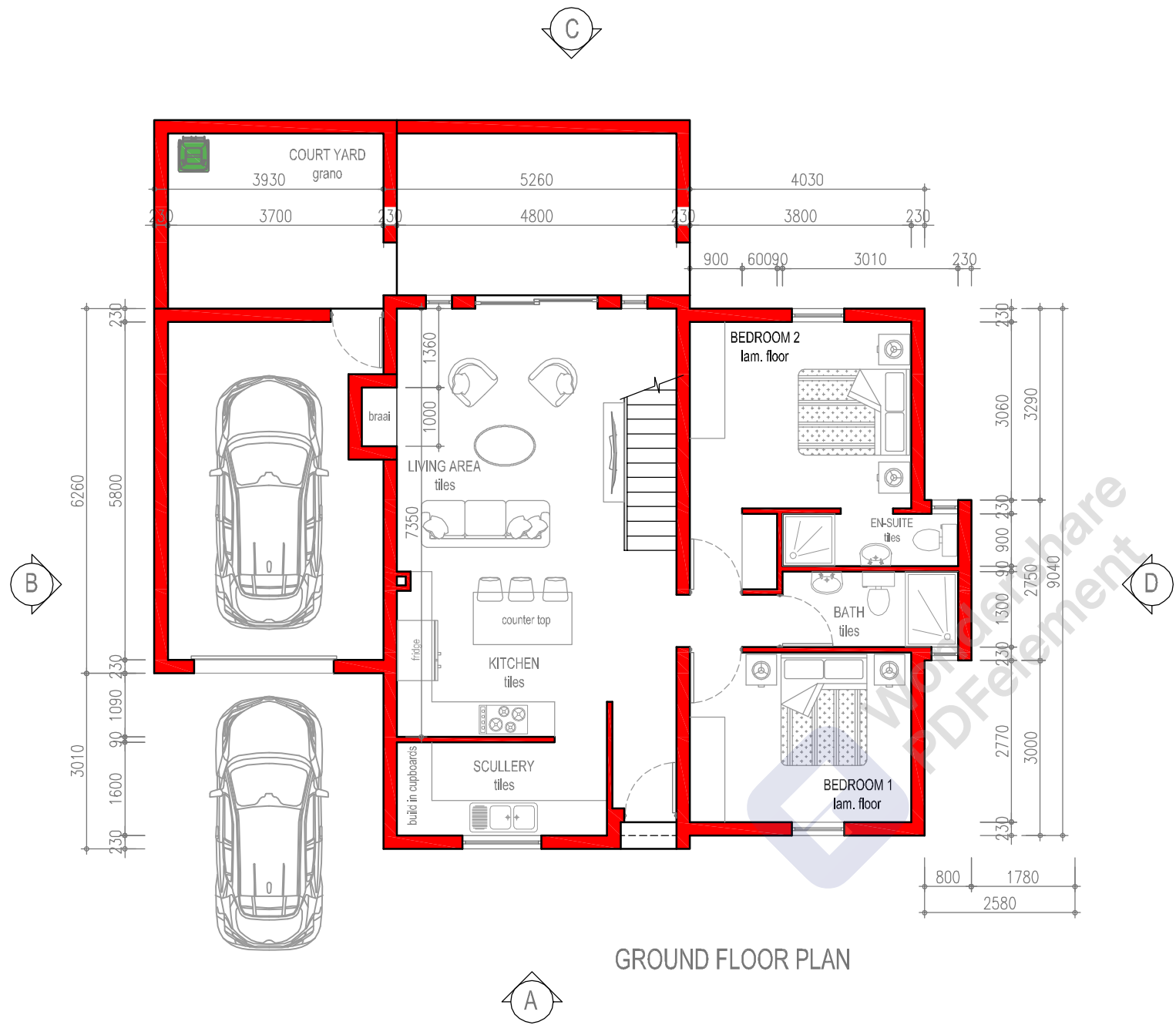
ELEVATION C

ELEVATION D

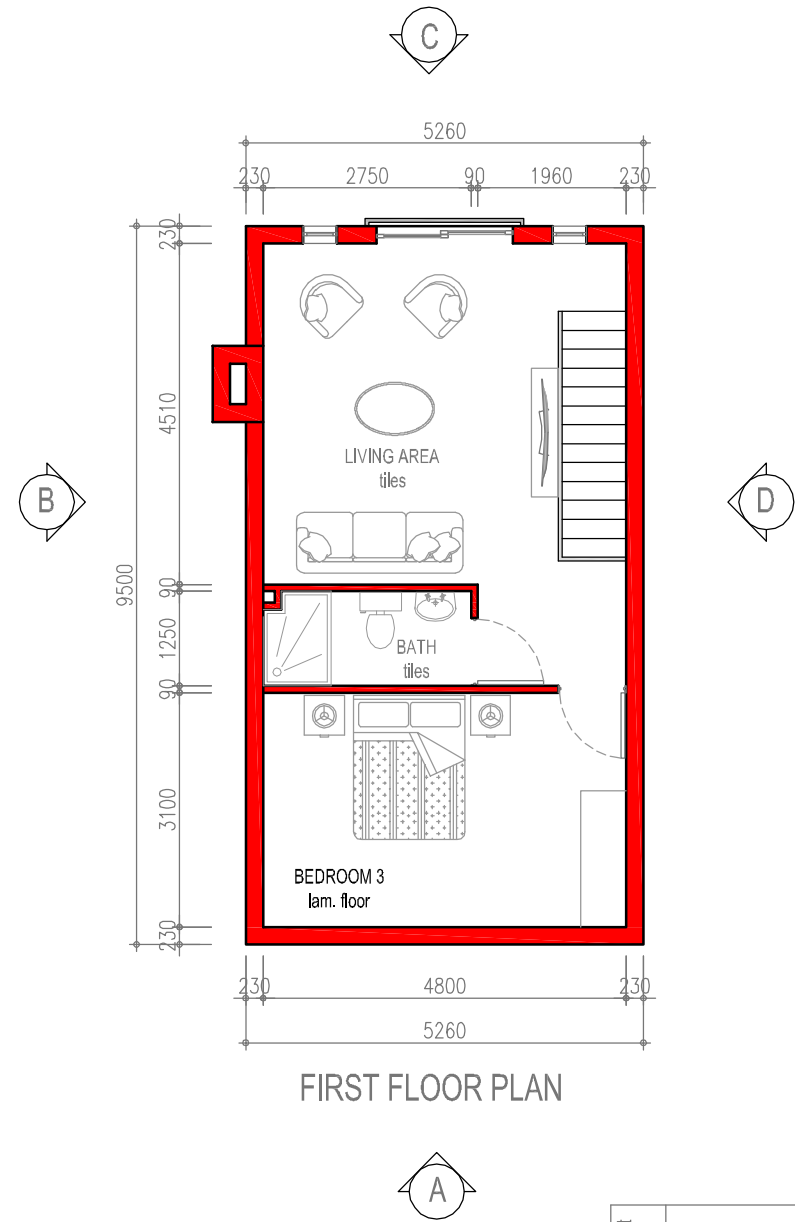
1 A
TYPICAL UNIT LAYOUT

Bedrooms	3
Bathrooms	3
Parking bay	1
Ground Floor	88.60m²
First floor	49.97m²
Garage size	24.6m²
House	163.17m²

project title	Hollebak Manor		
drawing issue	House Unit Types		
project	Proposed Development on Portion 55 of Farm Hollebak Strandfontein No. 270	Architectural Professional	Trevor Bock Registered as an Architectural Draughtsperson with the South African Council for the Architectural Profession Reg. Number : D 0106
arch. prof. signature	signature	Page	A1
		scale	1:100
drawn	T.B. & MVR	Checked	T.B



GROUND FLOOR PLAN

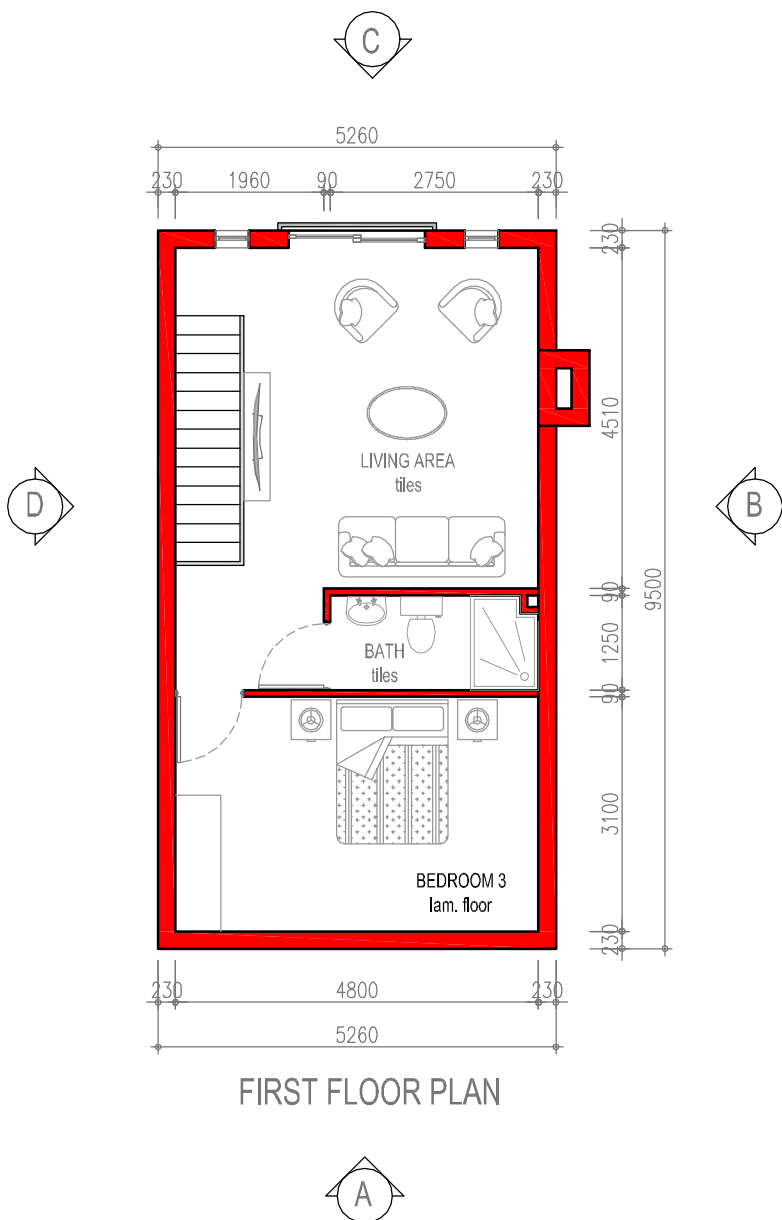
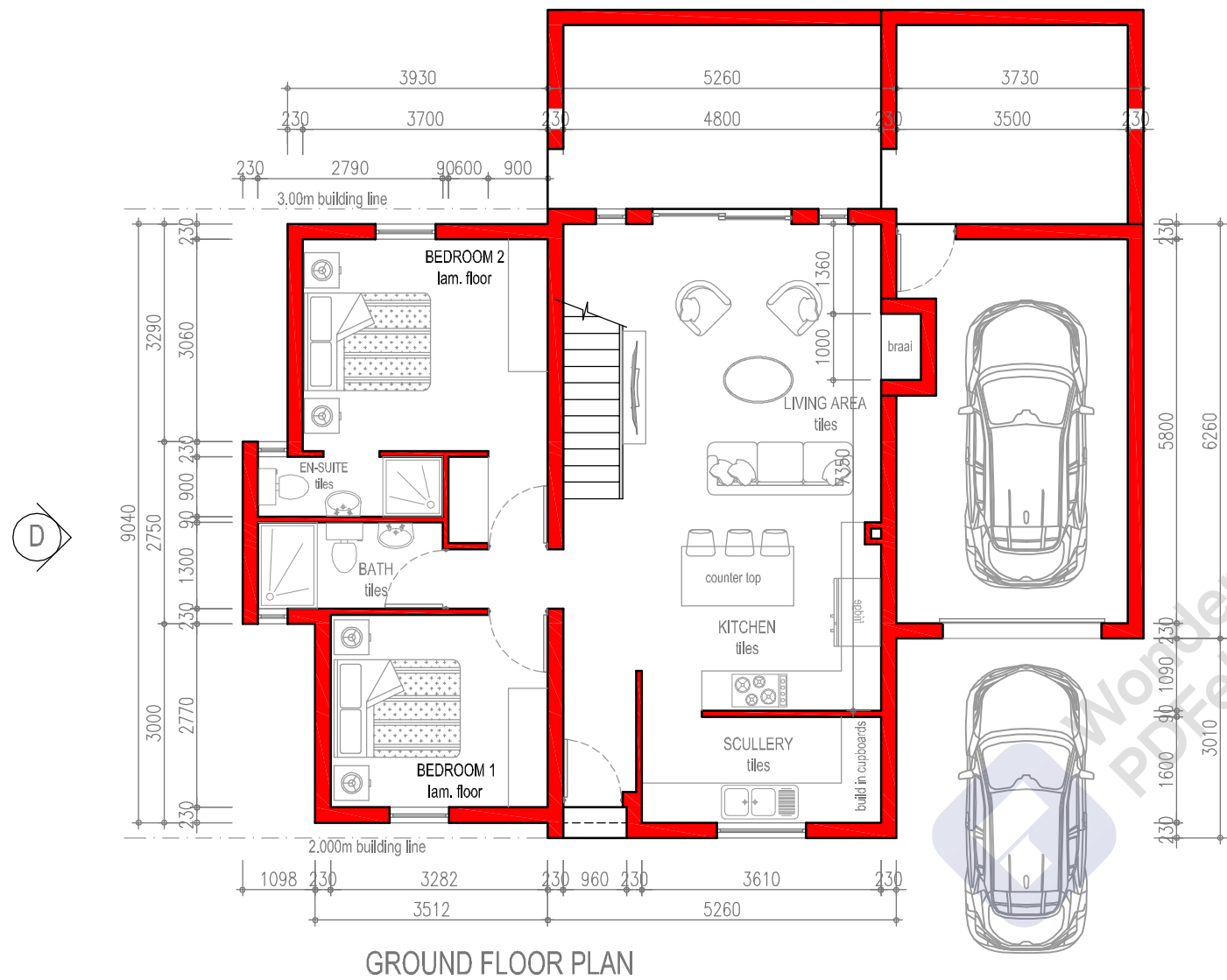


FIRST FLOOR PLAN

1 A
TYPICAL UNIT LAYOUT

Bedrooms	3
Bathrooms	3
Parking bay	1
Ground Floor	88.60m ²
First floor	49.97m ²
Garage size	24.6m ²
House	163.17m ²

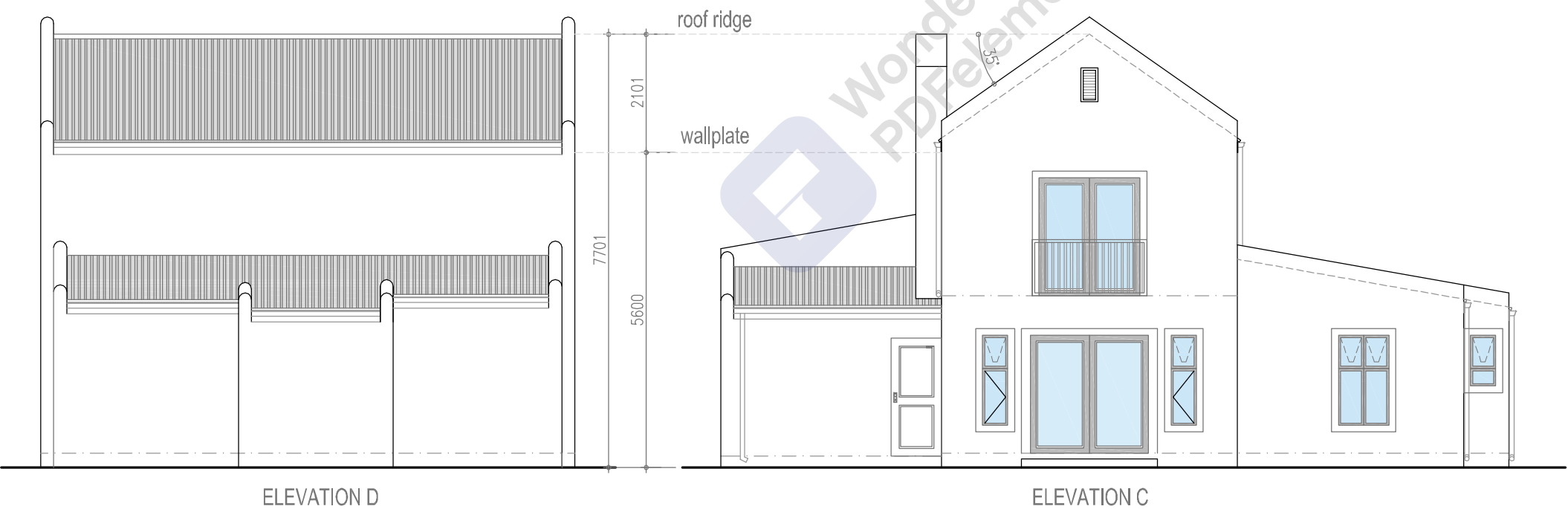
project title	Hollebak Manor		
drawing issue	House Unit Types		
project	Proposed Development on Portion 55 of Farm Hollebak Strandfontein No. 270	Architectural Professional	Trevor Bock Registered as an Architectural Draughtsperson with the South African Council for the Architectural Profession Reg. Number : D 0106
arch. prof. signature	signature	Page	A1
drawn	T.B. & MVR	scale	1:100
		Checked	T.B



1 A
TYPICAL UNIT LAYOUT

Bedrooms	3
Bathrooms	3
Parking bay	1
Ground Floor	88.60m ²
First floor	49.97m ²
Garage size	24.6m ²
House	163.17m ²

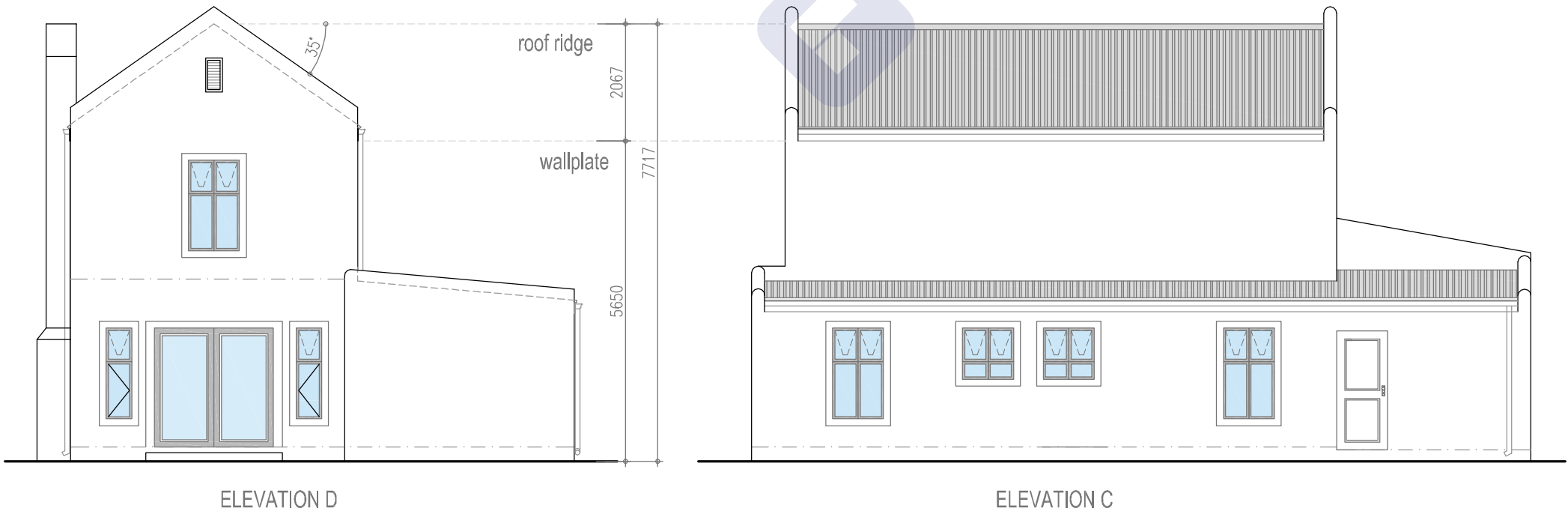
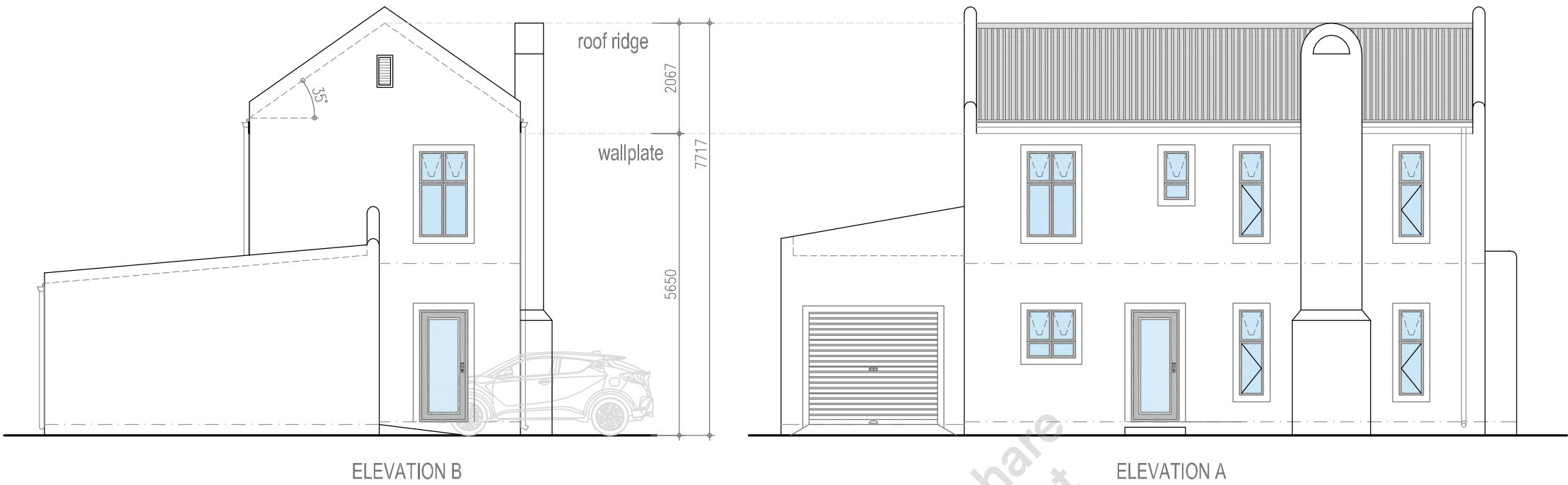
project title	Hollebak Manor		
drawing issue	House Unit Types		
project	Proposed Development on Portion 55 of Farm Hollebak Strandfontein No. 270	Architectural Professional	Trevor Bock Registered as an Architectural Draughtsperson with the South African Council for the Architectural Profession Reg. Number : D 0106
arch. prof. signature	signature	Page	A1
		scale	1:100
drawn	T.B. & MVR	Checked	T.B



1 A
TYPICAL UNIT LAYOUT

Bedrooms	3
Bathrooms	3
Parking bay	1
Ground Floor	88.60m ²
First floor	49.97m ²
Garage size	24.6m ²
House	163.17m ²

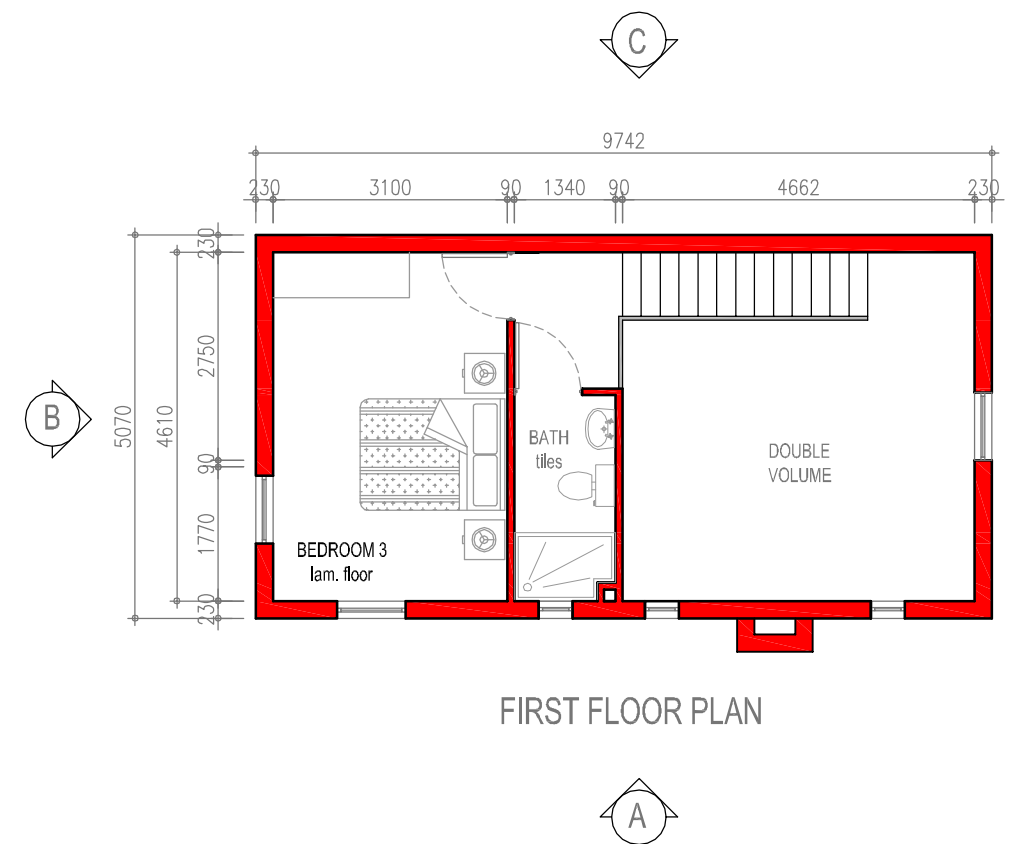
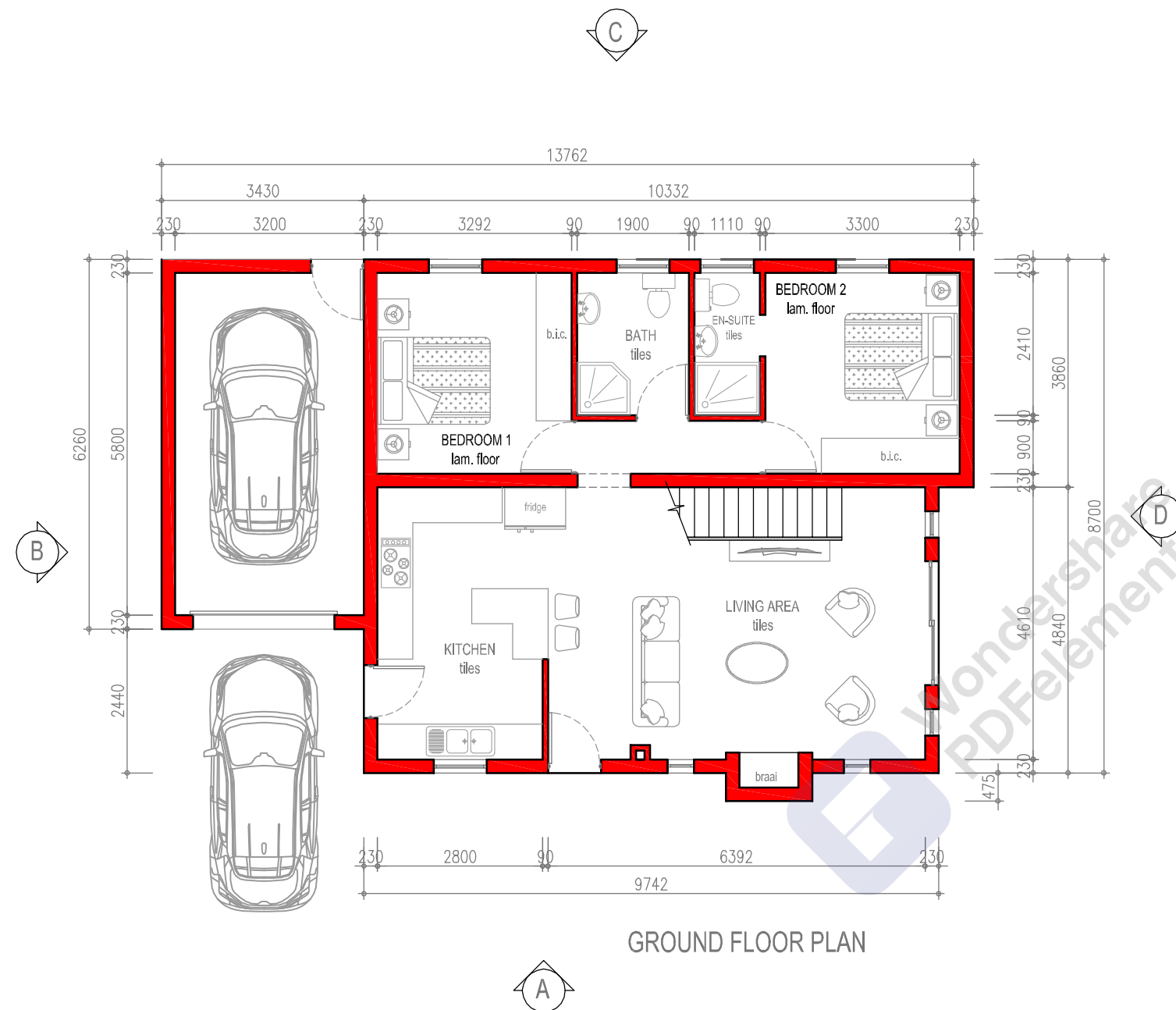
project title	Hollebak Manor		
drawing issue	House Unit Types		
project	Proposed Development on Portion 55 of Farm Hollebak Strandfontein No. 270	Architectural Professional	Trevor Bock Registered as an Architectural Draughtsperson with the South African Council for the Architectural Profession Reg. Number : D 0106
arch. prof. signature	signature	Page	A1
drawn		scale	1:100
	T.B. & MVR	Checked	T.B



2A
TYPICAL UNIT LAYOUT

Bedrooms	3
Bathrooms	3
Parking bay	1
Ground Floor	89.17m²
First floor	49.44m²
Garage size	23.98m²
House	162.59m²

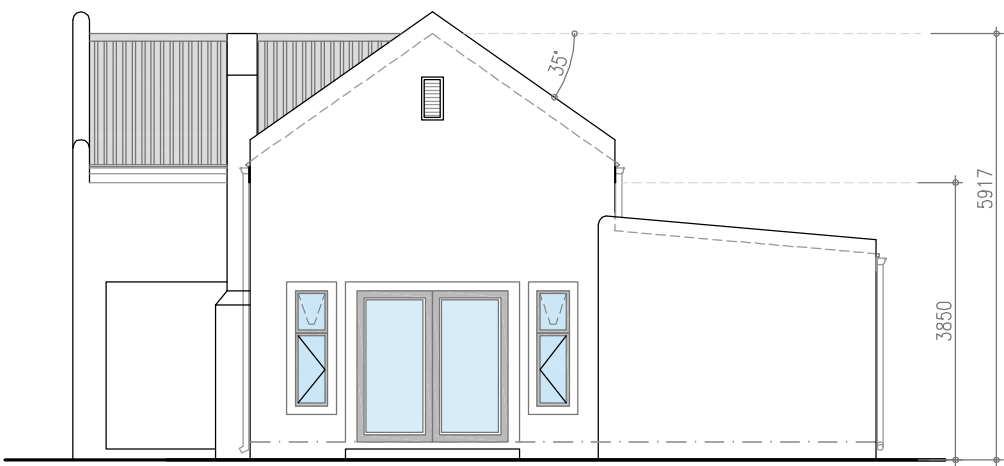
project title	Hollebak Manor		
drawing issue	House Unit Types		
project	Proposed Development on Portion 55 of Farm Hollebak Strandfontein No. 270	Architectural Professional	Trevor Bock Registered as an Architectural Draughtsperson with the South African Council for the Architectural Profession Reg. Number : D 0106
arch. prof. signature	signature	Page	A1
		scale	1:100
drawn	T.B & MVR	Checked	T.B



2A
TYPICAL UNIT LAYOUT

Bedrooms	3
Bathrooms	3
Parking bay	1
Ground Floor	89.17m ²
First floor	49.44m ²
Garage size	23.98m ²
House	162.59m ²

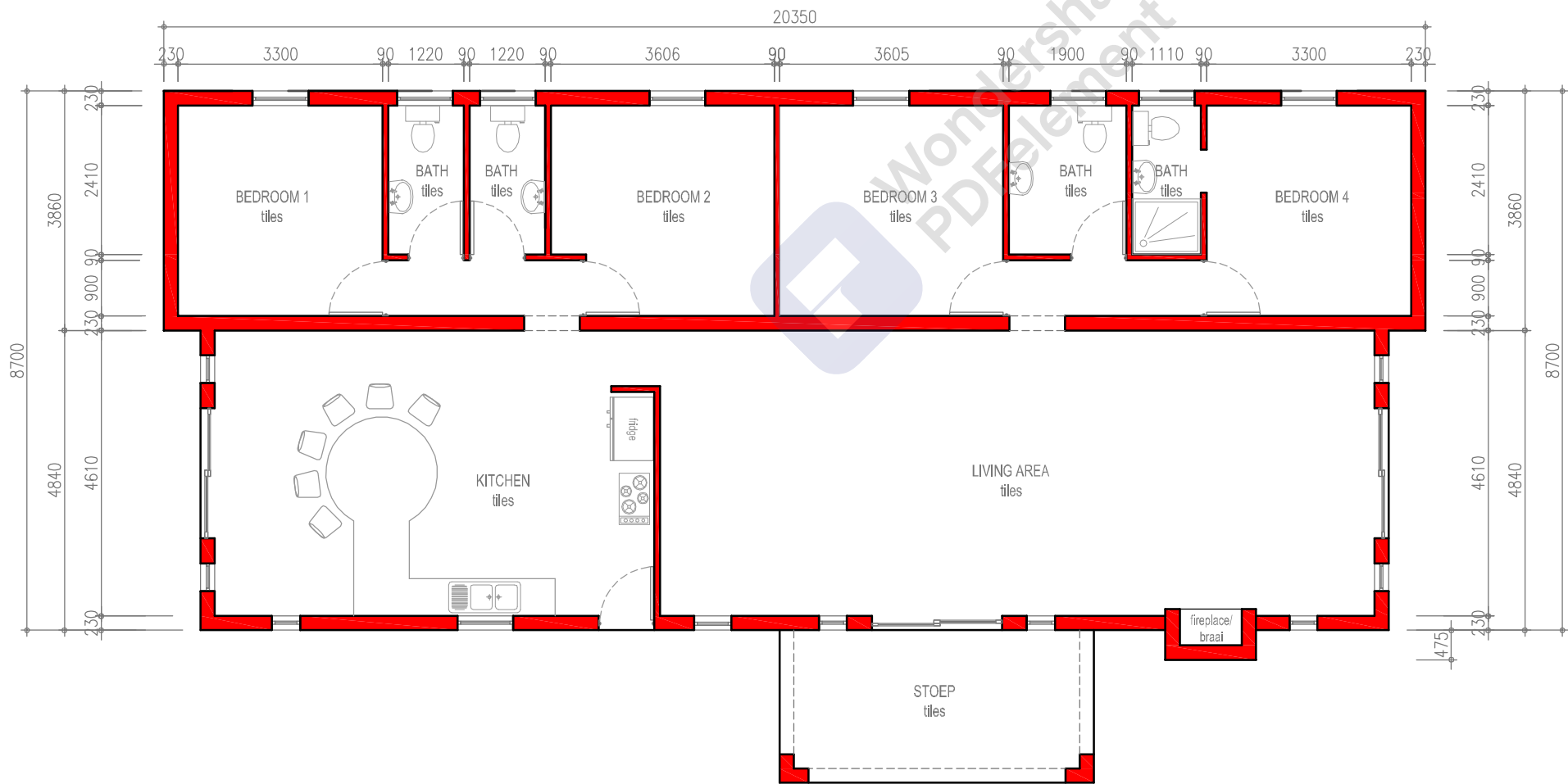
project title	Hollebak Manor		
drawing issue	House Unit Types		
project	Proposed Development on Portion 55 of Farm Hollebak Strandfontein No. 270	Architectural Professional	Trevor Bock <i>Registered as an Architectural Draughtsperson with the South African Council for the Architectural Profession</i> Reg. Number : D 0106
		Page	A1
arch. prof. signature	----- signature	scale	1:100
		Checked	T.B
drawn	T.B & MVR		



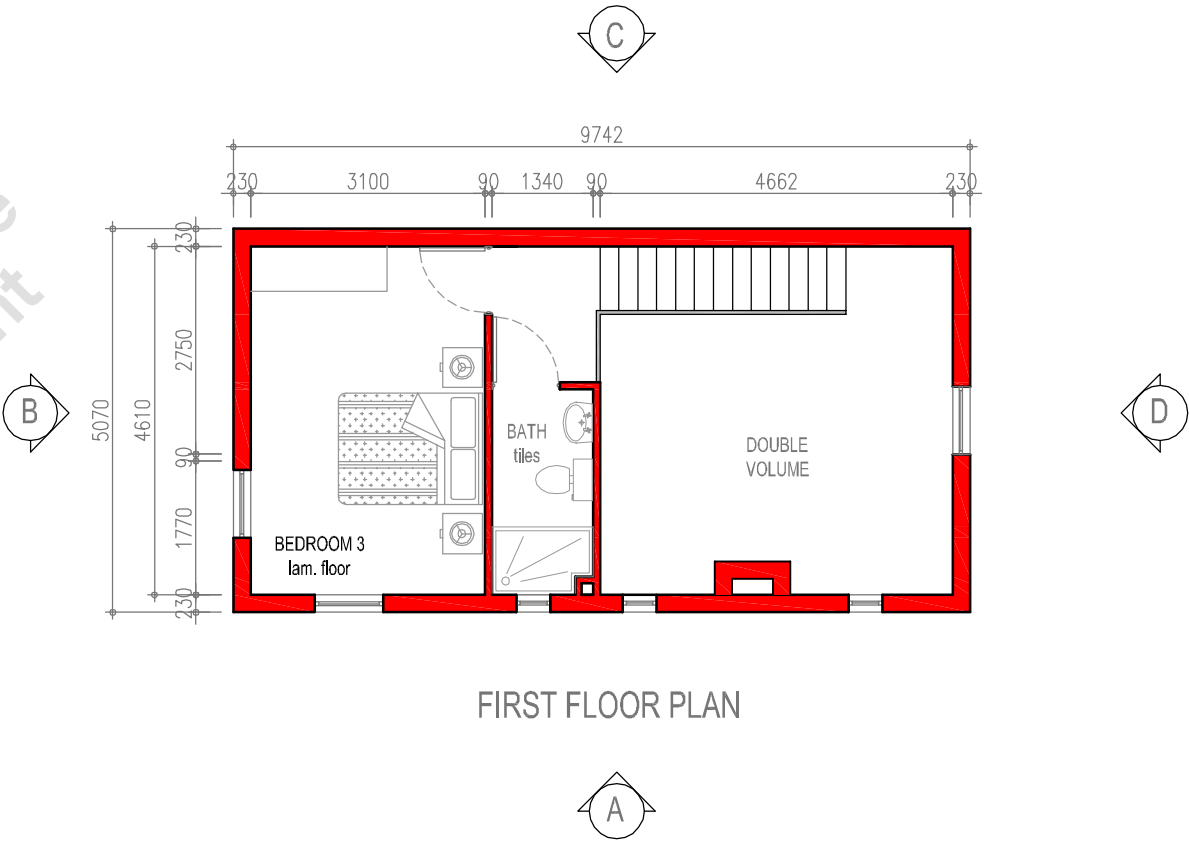
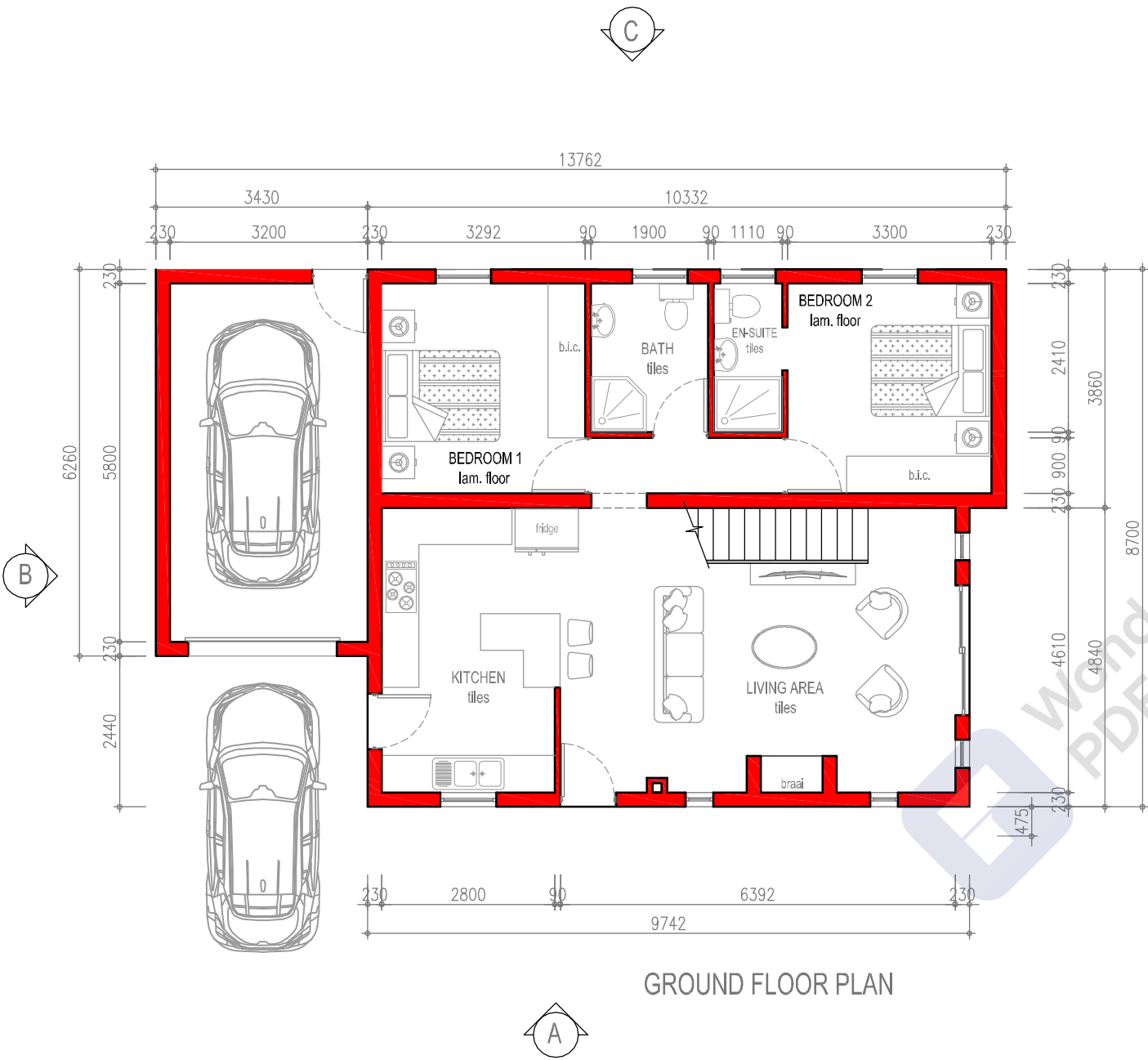
NORTH WEST ELEVATION



NORTH EAST ELEVATION



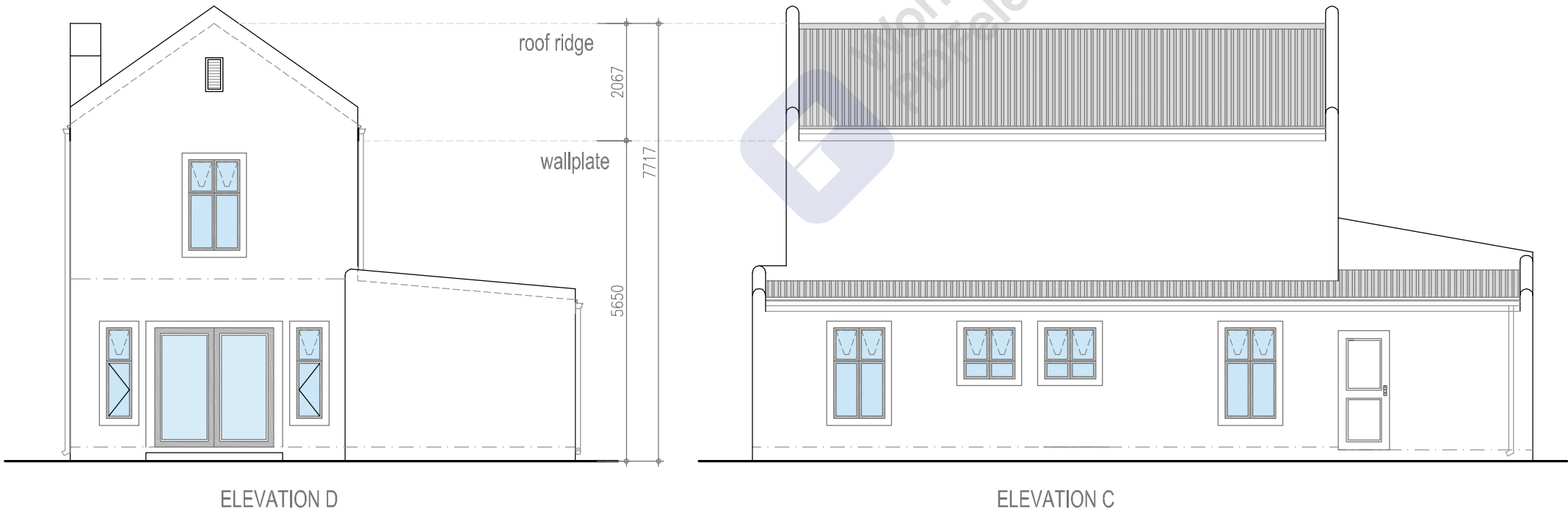
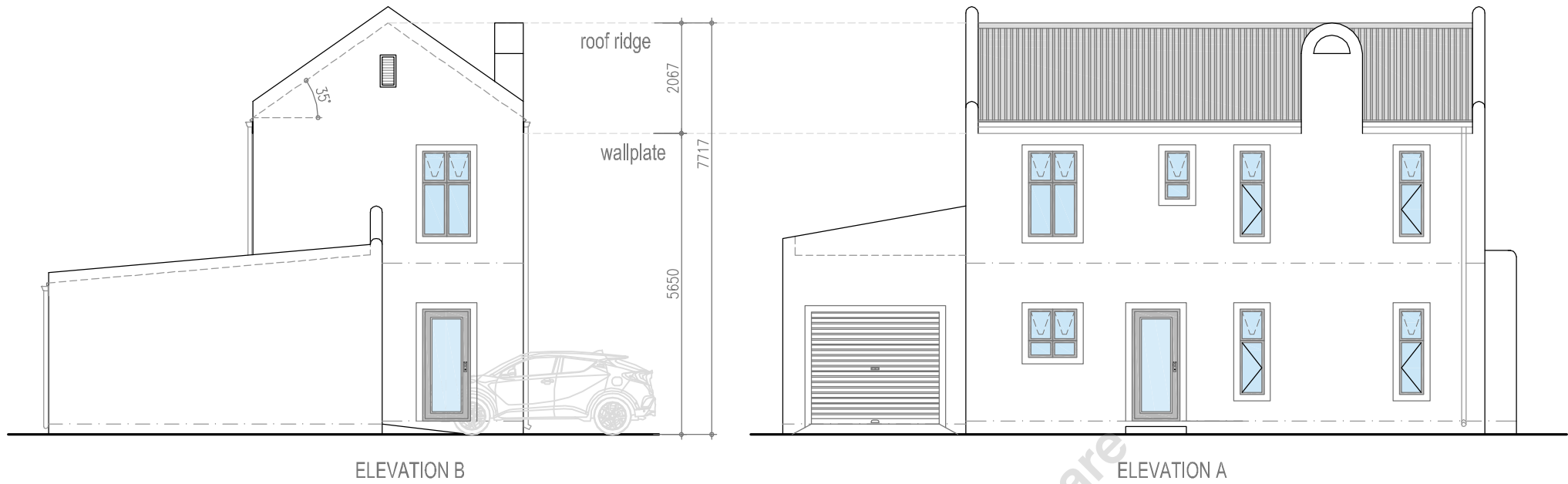
project title	Hollebak Manor		
drawing issue	House Unit Types		
project	Proposed Development on Portion 55 of Farm Hollebak Strandfontein No. 270	Architectural Professional	Trevor Bock Registered as an Architectural Draughtsperson with the South African Council for the Architectural Profession Reg. Number : D 0106
arch. prof. signature	signature	Page	A1
		scale	1:100
drawn	T.B. & MVR	Checked	T.B



2B
TYPICAL UNIT LAYOUT

Bedrooms	3
Bathrooms	3
Parking bay	1
Ground Floor	86.77m²
First floor	49.40m²
Garage size	20.22m²
House	156.39m²

project title	Hollebak Manor		
drawing issue	House Unit Types		
project	Proposed Development on Portion 55 of Farm Hollebak Strandfontein No. 270	Architectural Professional	Trevor Bock Registered as an Architectural Draughtsperson with the South African Council for the Architectural Profession Reg. Number : D 0106
arch. prof. signature	signature	Page	A1
		scale	1:100
drawn	T.B & MVR	Checked	T.B



2B
TYPICAL UNIT LAYOUT

Bedrooms	3
Bathrooms	3
Parking bay	1
Ground Floor	86.77m²
First floor	49.40m²
Garage size	20.22m²

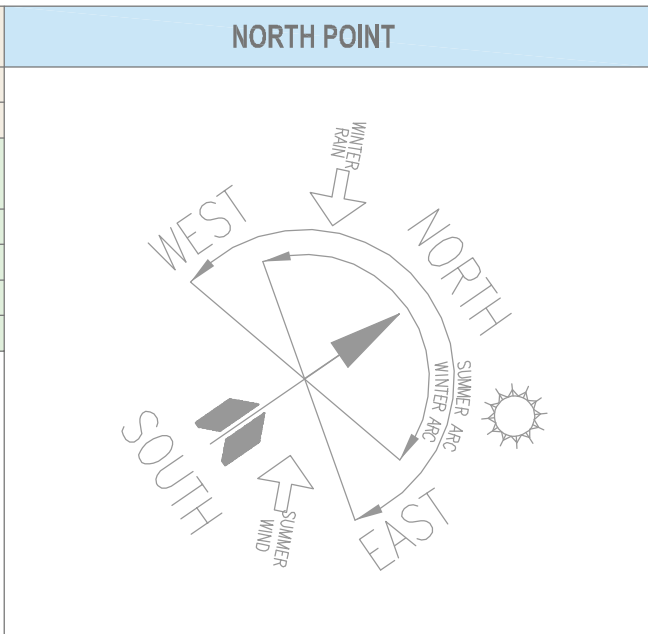
House 156.39m²

project title	Hollebak Manor		
drawing issue	House Unit Types		
project	Proposed Development on Portion 55 of Farm Hollebak Strandfontein No. 270	Architectural Professional	Trevor Bock Registered as an Architectural Draughtsperson with the South African Council for the Architectural Profession Reg. Number : D 0106
arch. prof. signature	signature	Page	A1
		scale	1:100
drawn	T.B. & MVR	Checked	T.B



NO.	ERF SIZE	NO.	ERF SIZE	TOTAL FLOOR AREAS	ERF	Unit Type	Cover Percentage
1	334m ²	17	229m ²	Type 1A 163.17m ²	1	2A	33.67%
2	230m ²	18	229m ²	Type 1B 158.97m ²	2	2A	49.19%
3	227m ²	19	229m ²	Type 2A 162.59m ²	3	2A	49.86%
4	231m ²	20	229m ²	Type 2B 156.39m ²	4	3B	39.39%
5	231m ²	21	229m ²	Type 3A 137.34m ²	5	3A	38.62%
6	227m ²	22	229m ²	Type 3B 135.10m ²	6	1A	49.83%
7	227m ²	23	227m ²	Houses	7	1A	49.86%
8	227m ²	24	227m ²	Quantity	8	1A	49.83%
9	227m ²	25	225m ²	Type 1A	9	1A	49.86%
10	227m ²	26	225m ²	Type 1B	10	1A	49.83%
11	229m ²	27	225m ²	Type 2A	11	1A	49.86%
12	226m ²	28	228m ²	Type 2B	12	3A	39.47%
13	228m ²	29	770m ²	Type 3A	13	3A	39.13%
14	228m ²	30	245m ²	Type 3B	14	1A	49.82%
15	228m ²	31	2743m ²	Total	15	3A	39.13%
16	231m ²						

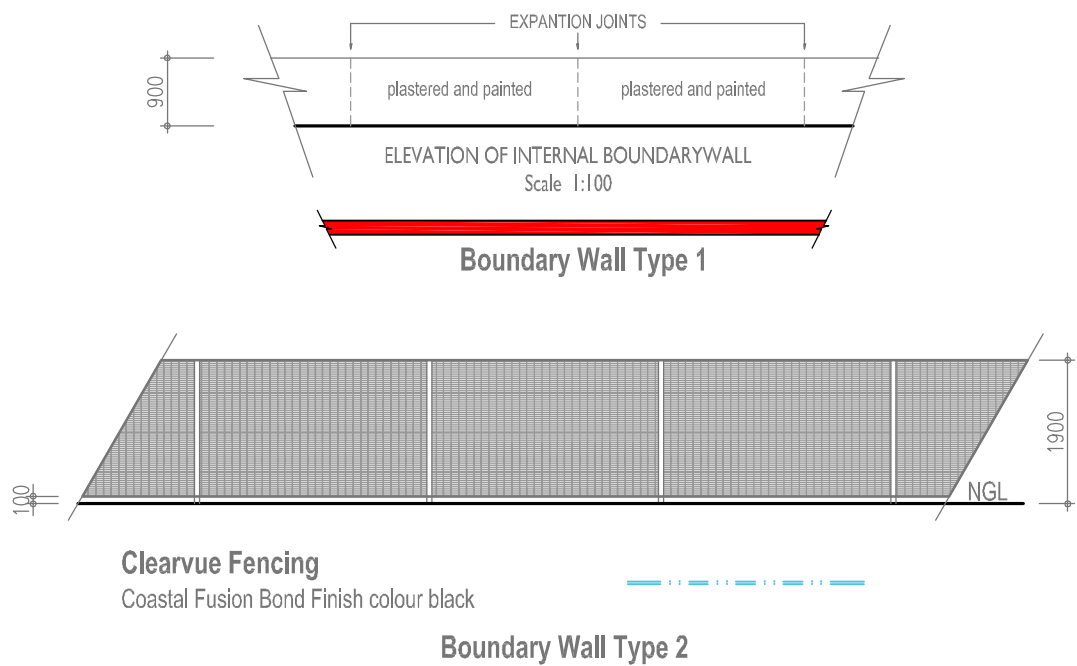
ERF	Unit Type	Cover percentage	Building Line Setbacks
16	3A	38.62%	Rear Building line 3.00m
17	1A	49.34%	Internal Street Building line 2.00m
18	1A	49.41%	
19	1A	49.34%	
20	1A	49.41%	
21	1A	49.34%	
22	1B	46.72%	
23	2A	49.86%	
24	2A	49.86%	
25	2A	50.29%	
26	2A	50.29%	
27	2A	50.29%	
28	2A	50.29%	
29	Multi P/Build.	23.90%	



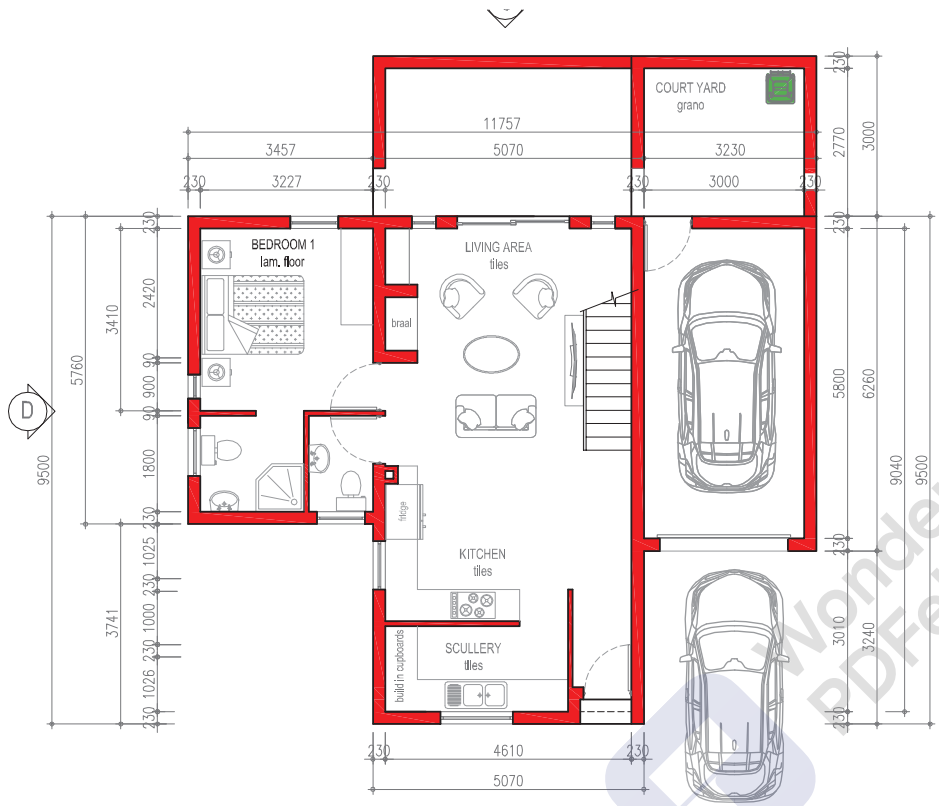
GENERAL SPECIFICATIONS:

Do not deviate from the following specifications as indicated on these plans which include but are not limited to external finishes and construction specifications, the design type, size, and style of all windows and doors, external detailing, design or aesthetics. Quality of all materials and workmanship to comply with the relevant sabs specifications. Contractors are to locate existing services on site, and are to protect these from damage throughout the duration of work. Contractors shall be responsible for ensuring the structural stability of all components of their work and ascertain that the main structure is capable of supporting all loads applied thereto.

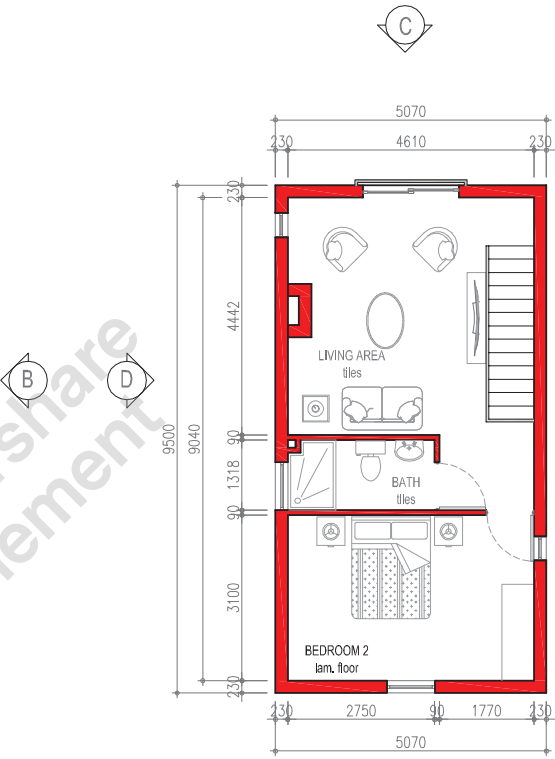
Contractor and Sub-Contractors to check all levels and dimensions on site before any work is commenced. Figured dimensions to be taken in preference to scaled measurements and large scale details supercede small scale drawings. All work to be done in accordance National Building Regulations and SANS 10400 and all requirements of Municipal and Local Authorities concerned are to be adhered to. No part of construction may encroach building lines. Finishes specified on drawings are superceded by finishing schedules and specifications. Cross reference all structural works with Engineer's drawings and specifications



Hollebak Manor			
Site Development Plan			
Project	Proposed Development on Portion 55 of Farm Hollebak Strandfontein No. 270	Project	Trevor Bock Registered as an Architectural Draughtsman with the South African Council for the Architectural Profession Reg. Number : D 0106
Drawn by	T.B. & M.V.R.	Page	A1
Scale	1:200	Scale	1:200
Drawn by	T.B. & M.V.R.	Drawn by	T.B.



GROUND FLOOR PLAN

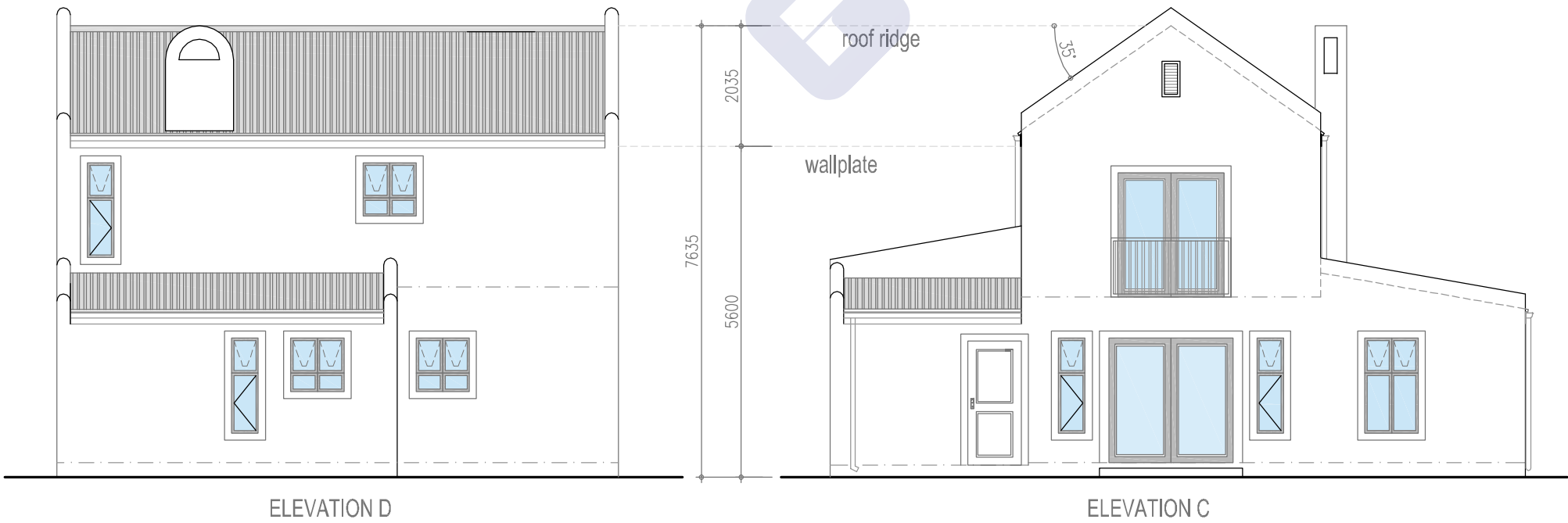
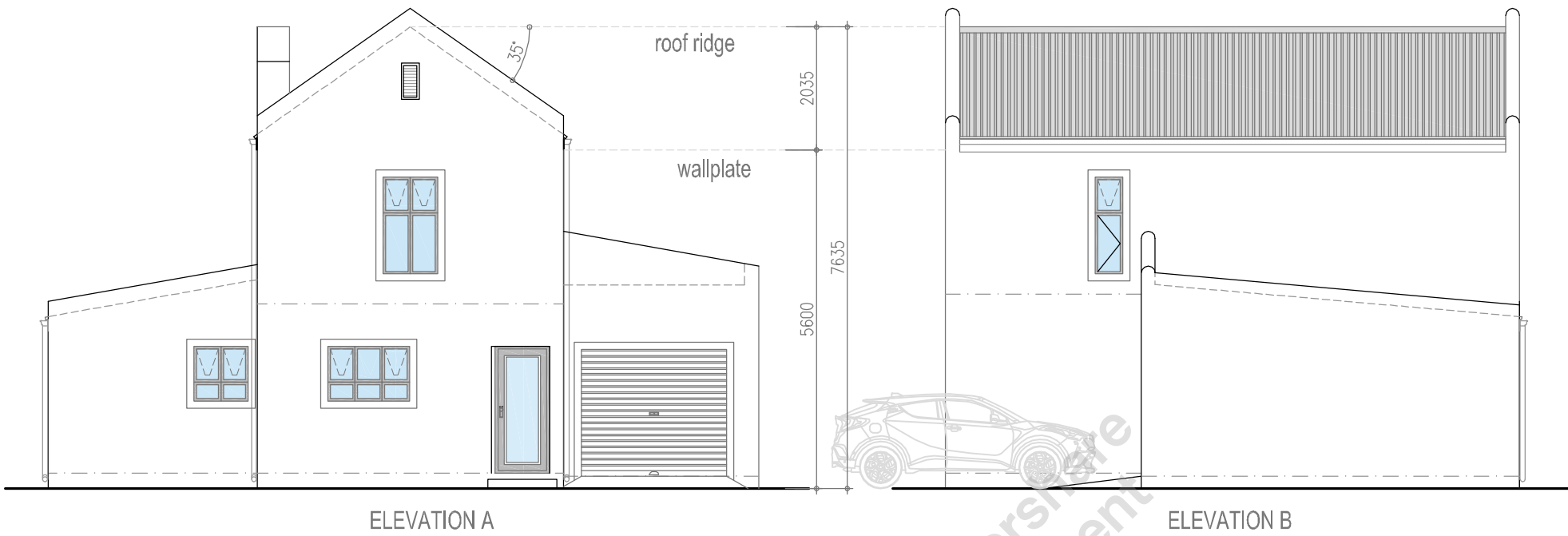


FIRST FLOOR PLAN

3 A
TYPICAL UNIT LAYOUT

Bedrooms	2
Bathrooms	3
Parking bay	1
Ground Floor	68.94m ²
First floor	48.17m ²
Garage size	20.21m ²
House	137.34m ²

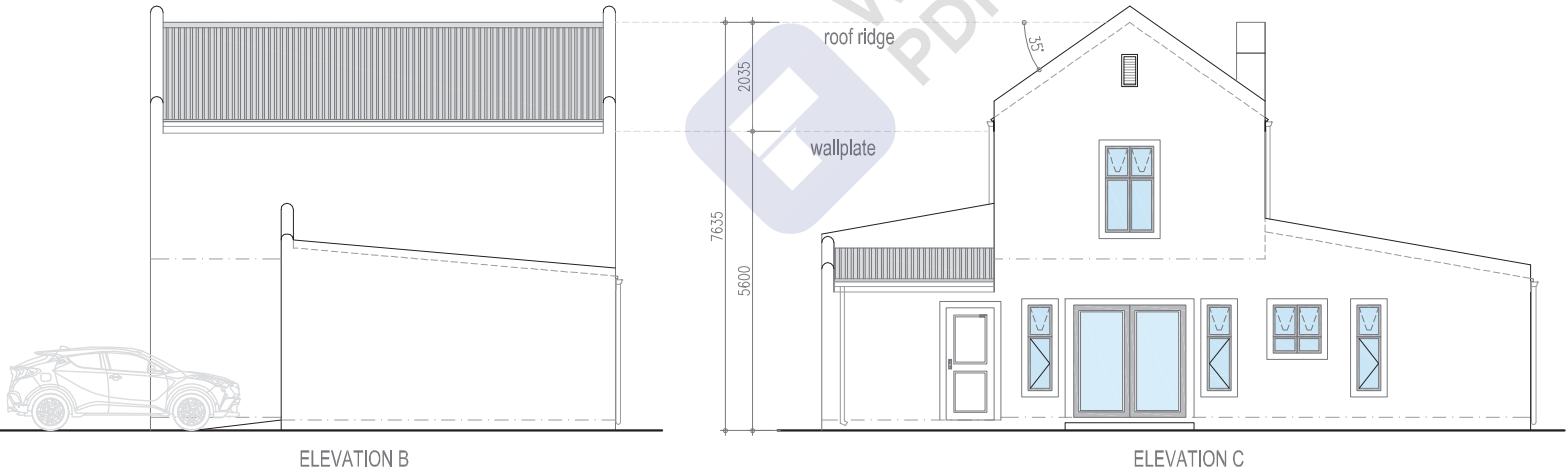
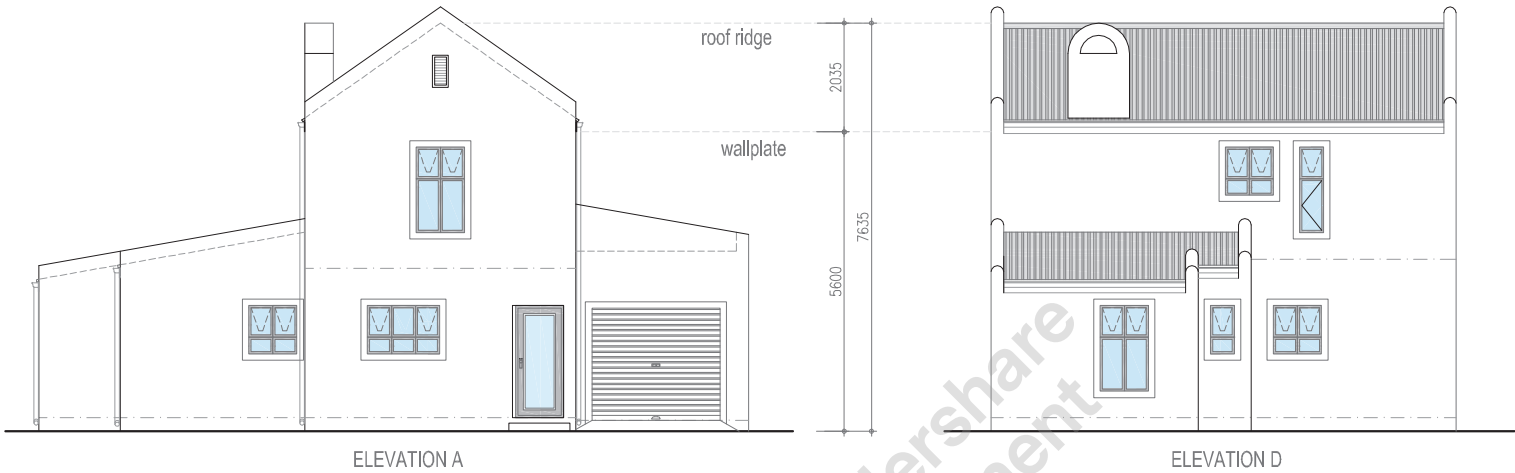
project title	Hollebak Manor		
drawing issue	House Unit Types		
project	Proposed Development on Portion 55 of Farm Hollebak Strandfontein No. 270	Architectural Professional	Trevor Bock Registered as an Architectural Draughtsperson with the South African Council for the Architectural Profession Reg. Number : D 0106
arch. prof. signature	signature	Page	A1
drawn	T.B & MVR	scale	1:100
		Checked	T.B



3 A
TYPICAL UNIT LAYOUT

Bedrooms	2
Bathrooms	3
Parking bay	1
Ground Floor	68.94m ²
First floor	48.17m ²
Garage size	20.21m ²
House	137.34m ²

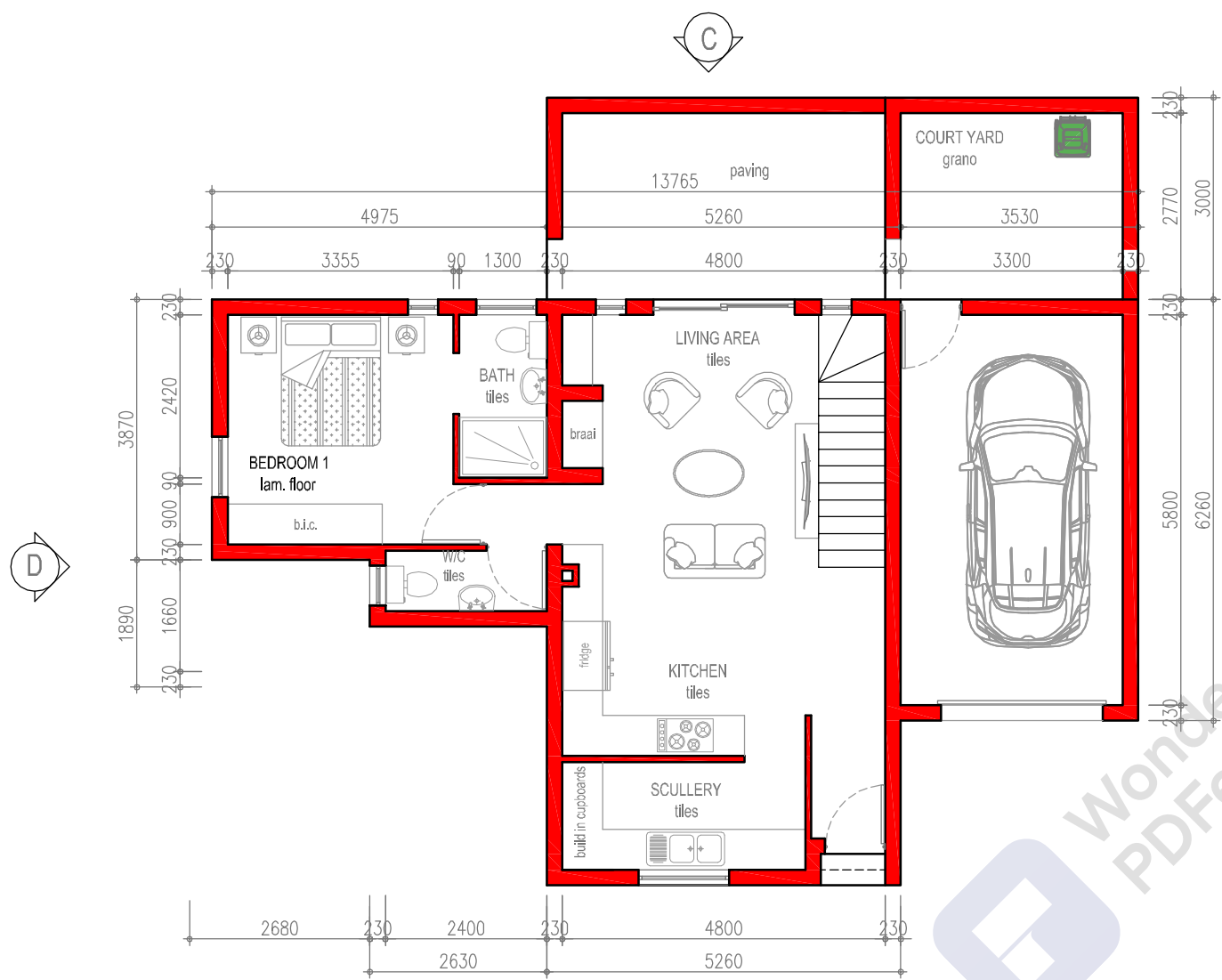
project title	Hollebak Manor		
drawing issue	House Unit Types		
project	Proposed Development on Portion 55 of Farm Hollebak Strandfontein No. 270	Architectural Professional	Trevor Bock Registered as an Architectural Draughtsperson with the South African Council for the Architectural Profession Reg. Number : D 0106
arch. prof. signature	signature	Page	A1
		scale	1:100
drawn	T.B. & MVR	Checked	T.B



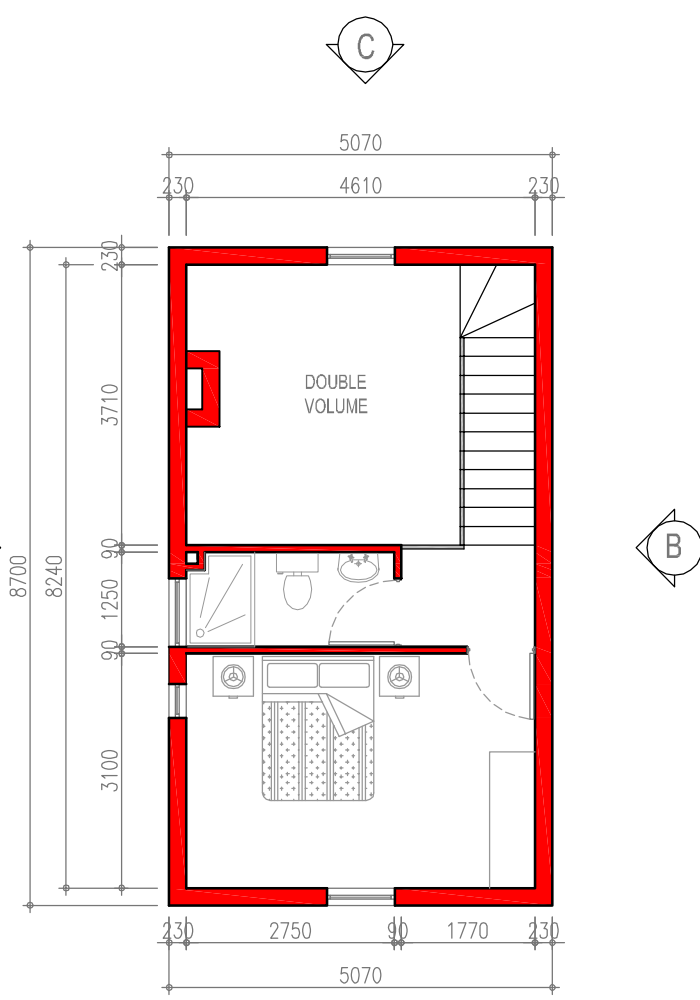
3 B
TYPICAL UNIT LAYOUT

Bedrooms	2
Bathrooms	3
Parking bay	1
Ground Floor	70.77m ²
First floor	44.11m ²
Garage size	20.22m ²
House	135.10m ²

project title	Hollebak Manor		
drawing issue	House Unit Types		
project	Proposed Development on Portion 55 of Farm Hollebak Strandfontein No. 270	Architectural Professional	Trevor Bock Registered as an Architectural Draughtsman with the South African Council for the Architectural Profession Reg. Number : D 0106
arch. prof. signature	signature	Page	A1
drawn	T.B & MVR	scale	1:100
		Checked	T.B



GROUND FLOOR PLAN



FIRST FLOOR PLAN

3 B
TYPICAL UNIT LAYOUT

Bedrooms	2
Bathrooms	3
Parking bay	1
Ground Floor	70.77m ²
First floor	44.11m ²
Garage size	20.22m ²
House	135.10m ²

project title	Hollebak Manor		
drawing issue	House Unit Types		
project	Proposed Development on Portion 55 of Farm Hollebak Strandfontein No. 270	Architectural Professional	Trevor Bock Registered as an Architectural Draughtsperson with the South African Council for the Architectural Profession Reg. Number : D 0106
arch. prof. signature	signature	Page	A1
drawn		scale	1:100
	T.B. & MVR	Checked	T.B